

NEW TOWN HALL/ FIRE DEPARTMENT BUILDING

Well, here we are. It is September of 2011 & the new Town Hall stands. We have come a long way since January 10, 2010.

The shell of the building was completed in August of 2011. It has been quite a road getting to this point. Of course before we could start the project, there were many



obstacles to overcome. So, we found ourselves pouring concrete in the middle of winter & of course we haven't had a brutal winter like the winter of 2010 in many years. So much snow & cold!

Now we move forward. It is our hope that the Fire Department side will be completed this Fall so that the trucks & ambulances can be functional from a normal environment. As it is now, we have the apparatus spread all over town & are responding from different locations.

It is our plan to be able to have a few functional offices in the Town Hall by the time the snow flies.

At this time the bids for the interior finishes have been awarded so that this goal can be accomplished.



As with any major project, there are always financial challenges & there have been many unexpected expenses.

All donations will be accepted to add to our restoration fund. If you would like to make a donation please make your check out to:

Town of Ashland Restoration Fund
PO Box 129 Ashland, NY 12407

Thank you!

HURRICANE IRENE - 2011

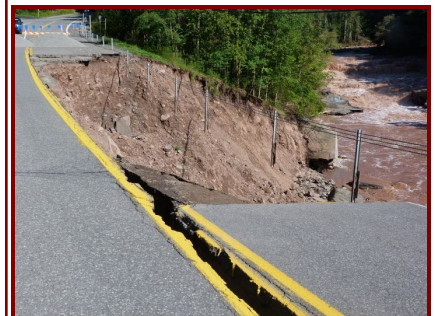
On Sunday, August 28, 2011, the whole Northeast experienced the ravages of Hurricane Irene. She left behind devastation that is too difficult to express in words. Our neighbors, Prattsville & Windham, were hardest hit. Ashland did not

experience the full impact of devastation that other towns did.



Carrington Road

There were several homes here that did flood and a few were destroyed, BUT there was no loss of life in Ashland. Our Fire Department diligently evacuated Winco Trailer Park in the early morning hours but sadly most of the homes were destroyed there. During the storm we opened the new Town building for people to take refuge. The Red Cross, Salvation Army, National Guard & all the County agencies handled the situation as best they could. There have been many, many local heroes, too many to mention without forgetting some. According to older folks, this is the worst flooding Ashland has ever seen.



Route 23 at Red Falls

Continued on page 2

Why we were spared we'll never know.



Dr. Maier's Farm

Financial support is greatly needed. If you wish to donate please note funds below that have been set up for this purpose.

Town of Ashland Re: Flood Donation

PO Box 129 Ashland, NY 12407

Prattville Flood Relief

c/o NBT Bank of Grand Gorge

Grand Gorge, NY 12434

Catskill Flood Relief

c/o NBT Bank of Grand Gorge

Grand Gorge, NY 12434

Stanley is updating our website www.ashlandhistorical.org with more information as the Machinery Show date draws near. You can also visit www.ashlandny.com for more info.

We will need shelving for storage in the new building. We are hoping our Machinery Show will be successful in bringing the funds needed to accomplish this goal.

Now it's your turn; should you have information or ideas for us, please contact me or our members anytime. New insights are always welcome. We feel the Machinery Show is a great way to visit with old friends- enjoy good food- have a little time in our busy lives to relax.

I would ask that you consider renewing your membership so that we can continue our efforts in preserving our Town's history. Call or e-mail any time to:

Dawn Thorp, President

Phone: 518-734-6423

or Email: hobbleinn@aol.com



TOUR OF ASHLAND

The Historical Association is developing a program that will provide a glimpse into Ashland's history from the comfort of your own vehicle (car, truck, motorcycle etc). We hope it will give "Sunday Drive" a whole new meaning!

Numbered markers and GPS coordinates will locate sites & a booklet will give a brief description of the who, what, when & how of each location.

Points of interest include: schools, hotels, taverns, churches, cemeteries & businesses - Past & Present.

Tour de Ashland booklets will be available at the 4th Annual Machinery Show on June 2, 2012 & at the Town Offices located at 12094 Route 23, Ashland, NY. If you have comments, questions or would like to help set this project in motion, contact Pat or Bob Ferris at bobashland@aol.com

President's Corner

We are watching with anticipation as the new town building progresses. It has been very challenging since the fire. Waiting for the building to be finished along with keeping & storing all of our historical items has not always been easy. It takes awhile to find information sometimes. There are boxes scattered everywhere. We have several members storing paper work & boxes in their homes, including mine. My husband has been very patient with the boxes & paperwork.

Thank You Greg!



Blaine Partridge has donated storage units & the County is storing our records in Catskill. Thanks to all.

People are already working on next year's Annual Machinery Show, slated for Saturday June 2, 2012. Our theme will be: "Life on the Farm." We are having monthly meetings & organizing events & planning additional activities & events to expand the show. Stay tuned for more info. We enjoyed having a booth at the Bataviakill Stream Celebration; it is always fun to see people and visit. Michelle Fancher, our Town Historian & Donna Tompkins were busy selling raffle tickets and we had a modest display of historical books for perusal. Our drawing will be October 19th at our regular meeting. It's always fun to win money!

ASHLAND HISTORICAL ASSOC., INC. OFFICERS

PRESIDENT - Dawn Thorp

VICE PRESIDENT - Pat Ferris

SECRETARY - Diane Cross

TREASURER - Stanley Fancher

PUBLIC RELATIONS OFFICER -

Justine L. Koehler

BOARD OF DIRECTORS

Robert Zegel, Roberta Zegel, Pauline Lawrence,
Janet Post, Erik Allan, Donna Tompkins

Patricia Ferris, Wes Benson, Heather Younes,
Leona Knox, Jim Decker

Meetings are held on the 3rd Wednesday of each month at 7:00 PM at the temporary Town Office in front of Wes's Repair on Rt 23. Contact Diane at 518-734-3636 or e-mail at ashadmin@mhcable.com